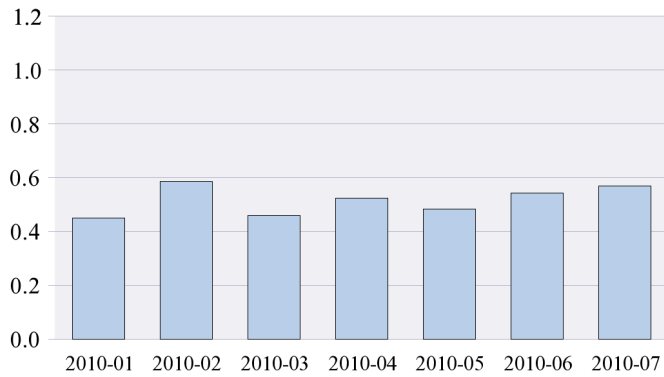


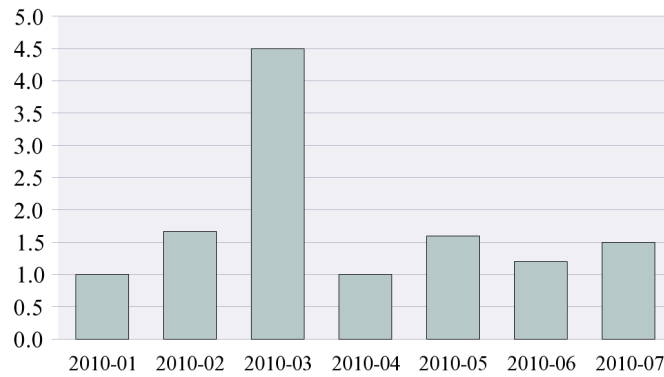
**General Medical Center Emergency Department
Radiology Test Utilization Analysis
For Patients with a Primary Diagnosis of Lower Back Pain**

Average Number of Radiology Tests Ordered Per Patient Visit

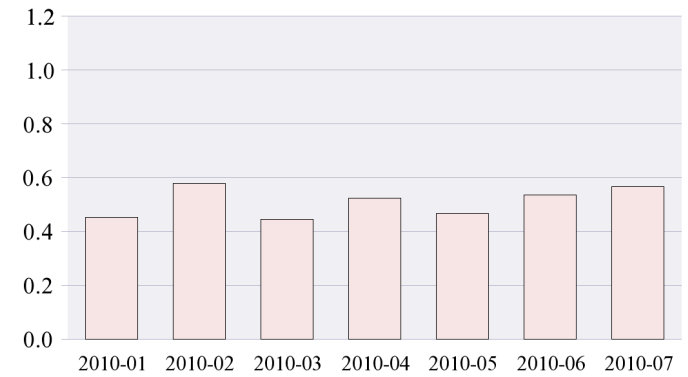
All Patients



Admitted Pts



Discharged Patients



Top 10 Radiology Tests Ordered

	ServiceName	Times Ordered	% of Xray Tests Ordered
1	L-Spine X-Ray	480	23%
2	T-Spine X-Ray	95	4%
3	Cervical Spine X-Ray	88	4%
4	Chest PA and Lat X-Ray	83	4%
5	Kidney Stone Protocol CT	80	4%
6	Pelvis X-Ray	29	1%
7	CT of Head w/o Contrast	28	1%
8	Thoracic Spine X-Ray	27	1%
9	Portable Chest X-Ray	20	1%
10	Hip L X-Ray	19	1%

Top 10 ICD9 SubGroupings with Radiology Tests Ordered

ICD9 Desc	Radiology Tests Ordered	% of Xray Tests Ordered	Avg # of Radiology Tests Per Admit Pt	Avg # of Radiology Tests Per Dschd Pt
BACKACHE NOS	598	28%	1.6	0.5
SPRAIN BACK	406	19%	0.5	0.6
LOW BACK SYNDROME/PAIN	104	5%	2.2	0.5
SCIATICA	98	5%	0.5	0.3
SPASM OF BACK MUSCLE	10	0%	1.0	0.4

**General Medical Center Emergency Department
Radiology Test Utilization Analysis
For Patients with a Primary Diagnosis of Lower Back Pain**

	Servicename	Times Ordered	% of Xray Tests Ordered
		Total:	45%

ICD9 Desc	Radiology Tests Ordered	% of Xray Tests Ordered	Avg # of Radiology Tests Per Admit Pt	Avg # of Radiology Tests Per Dschd Pt
	Total:	57%		